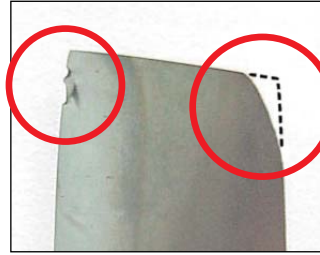


# Fuel Gas Filtration helps to increase turbine life

## The Problem



## Damage to turbine blades

Turbo machinery such as gas turbines require clean, dry gas for optimum operational life. However, most fuel gas contains solid particles and condensates in varying amounts. If the fuel treatment system lacks the flexibility to

deal with the variation in the quality of the fuel, contaminant will enter the turbine causing damage to the expensive turbine blades. As this damage occurs over time, it is not readily identifiable until it is too late.

## The Dollinger Solution

### High-efficiency filtration eliminates contaminants

Damage to turbine blades can run into millions of dollars. Such damage can be minimized by effective filtration of the fuel gas. Both liquid or solid contaminants must be prevented from entering the system. Dollinger has designed a filtration system that will reliably remove the entire range of contaminants.

The Dollinger GT Filter is a high-efficiency filter for removal of liquid condensate. It is installed on the fuel gas line before the gas enters the turbine.

If the reliable removal of solid contaminant is also required, Dollinger can provide skid-mounted packages (as pictured) consisting of a Dollinger particulate pre-filter followed by the high-efficiency Dollinger GT Filter.

To meet specific operator requirements, a full range of accessories is available, such as manual or automatic drain valves, safety relief valves, and liquid level gauges / controllers.

The Dollinger Solution has proven its effectiveness both in field trials and in industrial installations.



## Installations

Dollinger supplies fuel gas filtration equipment and provides detailed engineering assistance to OEMs, packagers, engineering contractors, and end users.

In **Europe**, Dollinger filters are protecting gas turbines in power generation and production facilities both onshore and offshore.

At one of our **Middle East** installations, Dollinger GT Filters protect all 61 gas turbines on the East-West pipeline in Saudi Arabia.

Please ask for detailed references on Dollinger installations.

### Turbines protected include:

- ABB GT10
- GE Frame 5 and Frame 6
- LM 6000
- Pratt & Whitney F4
- Rolls Royce Avon GT
- Rolls Royce RB211
- Siemens V64.3

**Please contact:**

**DOLLINGER INTERNATIONAL**  
Ballycasheen, Killarney, County Kerry, Ireland  
Phone: +353-64-33322  
Fax: +353-64-33371  
Email: sales@dollinger.ie



# DOLLINGER